

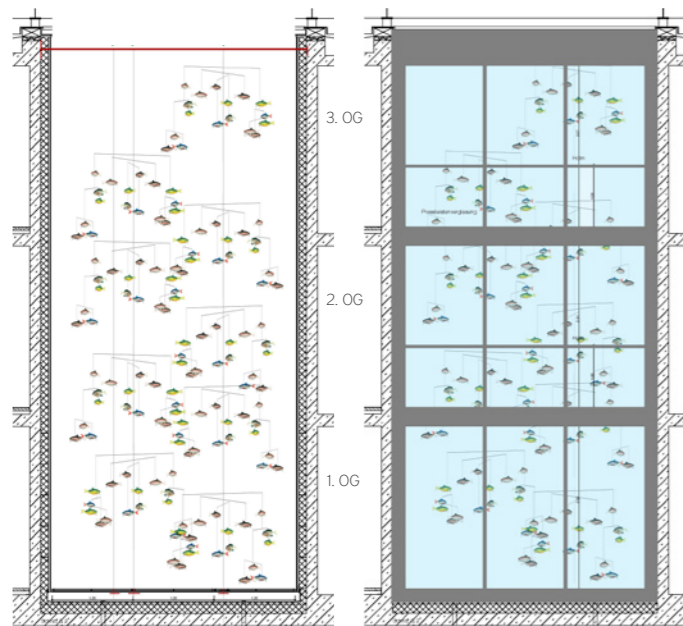


Technical data:

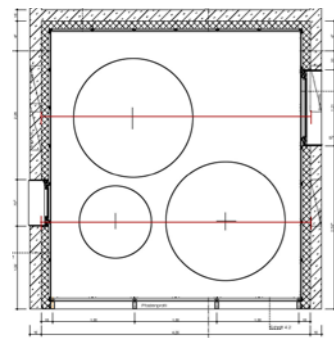
- 34 qm blue-tinted glass, Vanceva® color
- 3 steel beams
- 30m stainless steel cable, \varnothing 3mm
- 6 kg stainless steel tubes, \varnothing 10mm
- 1,4kg stainless steel tubes, \varnothing 6mm
- 43 cable clips
- lure dyneema \varnothing 0,41mm
- 260 silicon lures, size 250mm, weight 235g
- 9 recessed floor spotlights
- timer



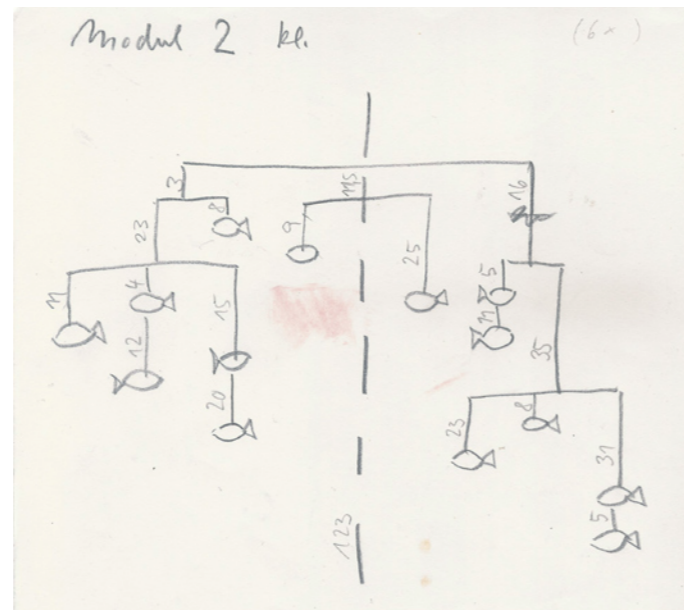
Open lightwell (H/W/L) 9 x 4 x 4 meter



Sheer plan



Plan view



Ricarda Mieth
 Czarnikauer Straße 4, 10439 Berlin
 www.ricardamieth.de

Photos: Christian Laukemper, Nicole Nickel

KLEINE FISCHE

Ricarda Mieth



“A fish with no bones is like a person with no faults”

Aquariums are closed systems full of big fish and small fry circling around, absorbed in their own affairs, perpetually under observation. The fish in this aquarium are commercially available bait, just right for catching giant pike. Here they swim in a dry lightwell, far removed from their purpose, in an alien environment.

“Like a Fish out of Water”

KLEINE FISCHE / SMALL FRY
Permanent Installation, Art In Architectur
JVA Düppel Prison, Berlin 2010

The “small fry” create a mise-en-scène of the narrow lightwell in the prison as an aquarium.

260 silicon fish are installed on a 9-metre-high mobile. The fish hang in the open air and move in the wind. The blue-tinted glass evokes water. The virtual biotope is illuminated from below when it grows dark outside.

